

# Panasonic

ideas for life

electronic board

UB-5315 UB-5815 UB-5310

## Panaboard™



Microsoft®  
Windows® 98,  
Windows® Me,  
Windows® 2000,  
Windows® XP  
operating systems  
USB 1.1

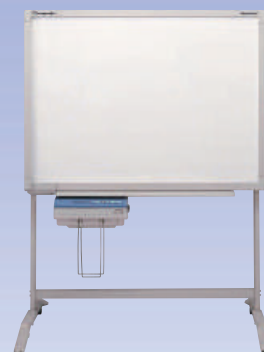
**Panaboard takes notes instead of you  
Improves your Presentations and meetings**



UB-5315



UB-5815



UB-5310

(Stand option)

# Panaboard™

Improves your Presentations and Meetings

Panasonic UB-5315



## Used for

- Seminars
- Meetings
- Brain Storming
- Scheduling
- Training
- Copying charts and graphs

### Panaboard UB-5315, UB-5815, UB-5310

- Our range of Panaboards come with an integral printer for easy-operation.
- Plain paper printing with multiple copies. (except UB-5310)
- Panaboard can work as a PC printer.
- Panaboard can be controlled from PC.
- Panaboard keeps 100% audience attention and increases participation.
- Panaboard increases efficiency and reduces meeting time.
- Panaboard can be wall-mounted or used with floor-stand option.
- Panaboard provides multi-copies, logic control and PC interface.

## All-in-one slim design No protruding paper tray.

**UB-5315** Endless 2 Screen / Standard size  
Standard or recycled paper

**UB-5815** Endless 2 Screen / Wide size  
Standard or recycled paper

**UB-5310** Endless 2 Screen / Standard size  
Thermal paper

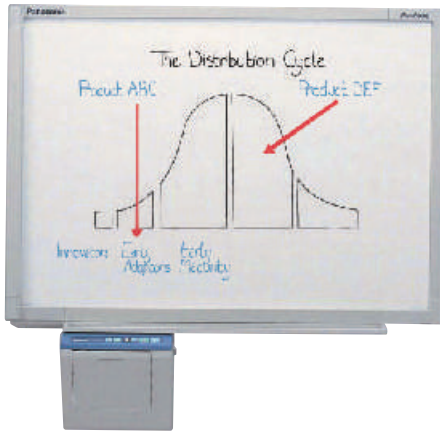


Wall Mount



Stand (option)

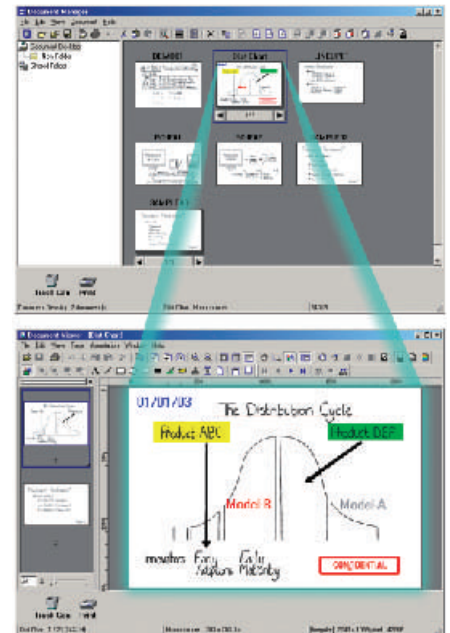




## PC Interface

### Document Management System

Panaboard UB-5315, UB-5815 and UB-5310 comes with utility software that consists of Document Manager and Document Viewer. The meeting contents on the Panaboard screen will become meeting minutes with some annotation by Document Viewer function. The Document Manager makes it easy to file and distribute the meeting minutes quite easily. Supported saving file format is BMP, TIFF, JPG, PNG and PDF.



*The Document Manager makes it easy to file and distribute the meeting minutes quite easily.*

The scanned image is monochrome.  
The annotation function is used to make the coloured text.



## TWAIN Driver

By just one click, you can scan the image on the Panaboard screen as image data to your computer and from your computer, you can control the Panaboard function just like operating the Panaboard control panel.

## Printer Driver

The Panaboard can work as a PC printer. In a meeting, if you need to print out some documents, the Plug & Play of USB makes it easy to print out documents from the Panaboard.



## UB-5315



## UB-5815



## UB-5310



General	Model number	UB-5315	UB-5815	UB-5310
Power Supply		AC 100 - 120 V, 50/60 Hz or AC 220 - 240 V, 50/60 Hz		
Power Consumption (Operational)		1.40 A (AC 100 - 120 V) 0.75 A (AC 220 - 240 V)		
External dimensions (Height X Width X Depth, without stand)		1,334 mm X 1,372 mm X 212 mm	1,334 mm X 1,735 mm X 212 mm	1,440 mm x 1,372 mm x 233 mm
Weight(without stand)		25 kg (55.1 lbs)	27 kg (59.5 lbs)	23 kg (50.7 lbs)
Ambient operating conditions		Temperature: 10-35 °C (50-95 °F) Humidity: 30-80% RH		
Writing implements		Dry erase felt-tipped markers (black, red and blue)		
<b>Input Block</b>				
Panel dimensions (Height X Width)		900 mm X 1,262mm	900 mm X 1,625 mm	900 mm X 1,262 mm
Panel surface		2		
Panel advance system		Endless scroll type		
Copying area (Height X Width)		850 mm X 1,250 mm	850 mm X 1,613 mm	850 mm X 1,250mm
Scanning system		Image sensor		
<b>Output Block</b>				
Printing		Fusion thermal transfer type		Thermal type
Copy paper		Standard or recycled paper		Heat-sensitive roll paper Paper thickness : 65 µm Core diameter : 25.4 mm or more
Copy paper size		A4/Letter*		
Copy density		8 dots/mm		
Copy color		Black		
Contrast adjustment		Two levels : Normal/Dark		
2-screen compressed copying		Yes		
Time required for Copying		15 s/sheet		
Continuous copies		1 to 9		
Paper empty indication		Yes		
Automatic cutter		—		Yes
<b>Computer Interfacing System Requirements</b>				
Computer		IBM® PC/AT or compatible machine with a CD-ROM drive		
CPU		Pentium® II or higher processor		
Interface		USB 1.1 (B connector)		
OS		Windows® 98/Me/2000/XP		
Memory		64 MB or more (Windows® 98/Me) 128 MB or more (Windows® 2000) 256 MB or more (Windows® XP)		
HD		At least 40 MB free space (except saving space for image file)		
<b>Accessories</b>				
<ul style="list-style-type: none"> <li>• Markers (Black, Red, Blue)    • Eraser    • Software CD-ROM    • Operating instructions, Installation manual</li> <li>• Wall-mount kit (Upper, Lower)    • Thermal transfer film (for UB-5315, UB-5815)</li> <li>• Thermal paper roll (for UB-5310)</li> </ul>				
<b>Separately Available</b>				
Stand : UE-608005				
Replacement film : UG-6001 (Set of 2 rolls [50m] for UB-5315, UB-5815)				
Markers : KX-B031 (set of 10 black markers), KX-B032 (set of 10 red markers), KX-B033 (set of 10 blue markers)				
Erasers : KX-B042 (set of 6 erasers)				
Marker and eraser set : KX-B035 (contains 1 black, 1 red, and 1 blue markers and 1 eraser)				

\* Letter size is for U.S.A. and Canada models.

## Note:

- Microsoft and Windows are either registered trademarks or trademarks of Microsoft Corporation in the United States and/or other countries.
- Windows® is Microsoft® Windows® operating system.
- IBM is a registered trademark of International Business Machines Corporation.
- Pentium is a registered trademark of Intel Corporation in the U.S. and other countries.
- All trademarks referred to in this catalog are property of their respective companies.

<http://panasonic.co.jp/pcc/en/>  
<http://www.panasonic.co.jp/global>

Design and specifications are subject to change without notice. PCC08031/EU-5315ULC-02 Printed in Japan

**Panasonic®**